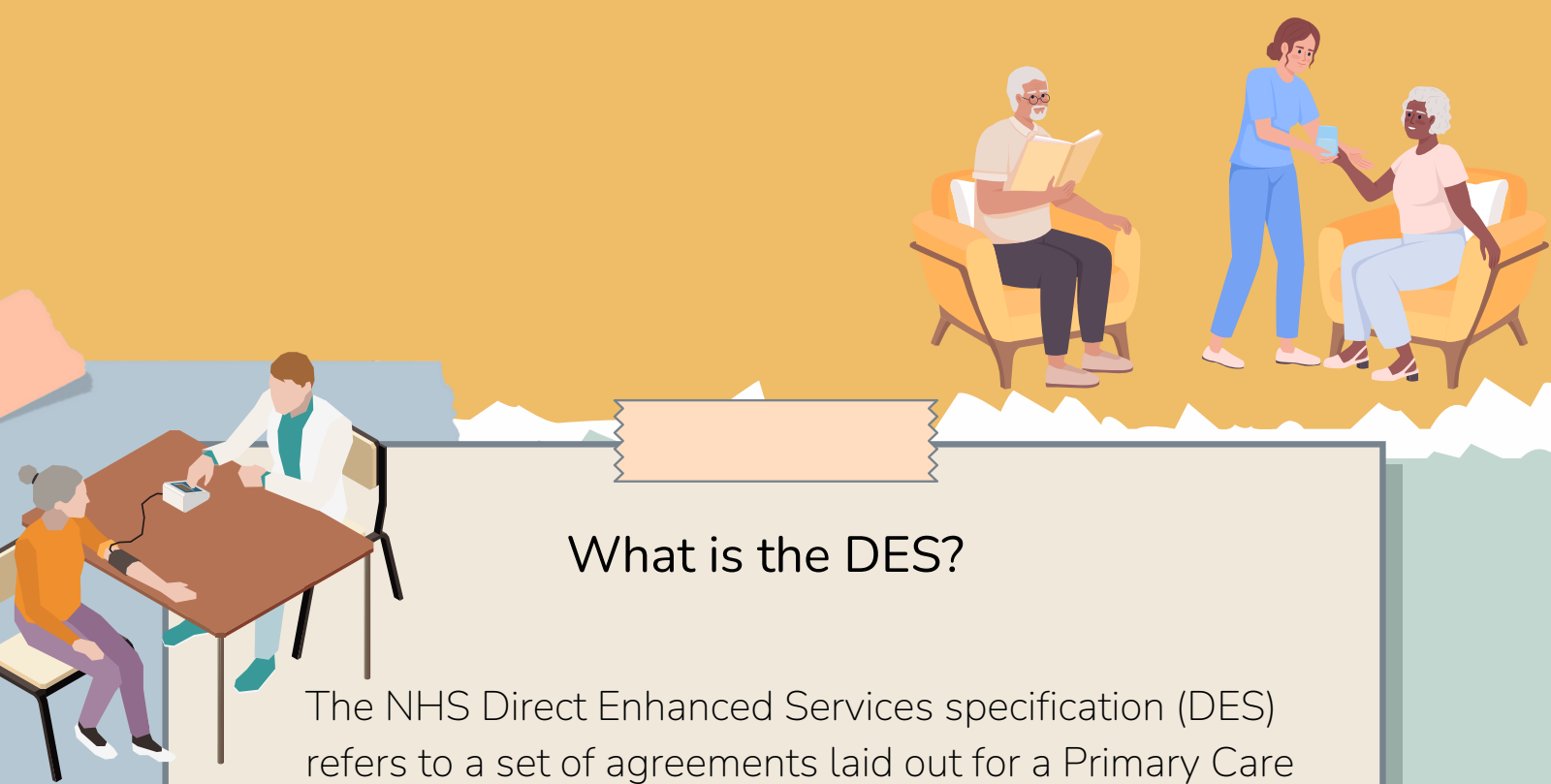


# The NHS DES specification: a guide to what care homes can expect from their named practice



## What is the DES?

The NHS Direct Enhanced Services specification (DES) refers to a set of agreements laid out for a Primary Care Network (PCN). The specification outlines the services that the PCN is expected to provide to their aligned Care Home.

## What services can Care Homes expect ?

Weekly Care home visits (can be virtual) where information can feed into MDT meetings (where appropriate).  
Medicines management: GPs and pharmacists working together to manage residents' medicines.  
Continuity of care: All residents in a care setting should have access to the same practice team.



## What hours will Care Homes receive support?

Care Homes can access support from the GP practices during working hours. Outside of these working hours, Care Homes are encouraged to access MiDoS. MiDoS is an online tool for people who work within or support health and social care in London. MiDoS enables healthcare professionals to find local services such as GP practices, pharmacies or Urgent Care.



## What training will practices be able to provide?

Please contact your local training hub or the NEL Training HUB at **[nelondonicb.traininghub@nhs.net](mailto:nelondonicb.traininghub@nhs.net)** who will be able to advise on available training in your locality.

For further information please contact:  
**Selda Bicer** [s.bicer@nhs.net](mailto:s.bicer@nhs.net) Enhanced Health in  
Care Home Lead  
NHS NEL